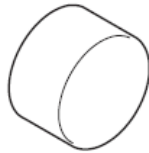
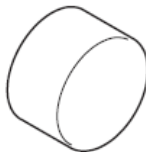


# Montageanleitung



**Steel Fixfit**  
35884800



**Steel Fixfit Deluxe**  
35888800  
**Starck Fixfit Deluxe**  
27451XXX



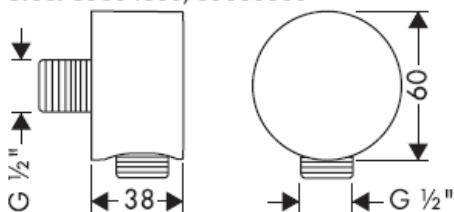
**Montreux  
Fixfit Deluxe**  
16884XXX

Eigensicher gegen Rückfließen

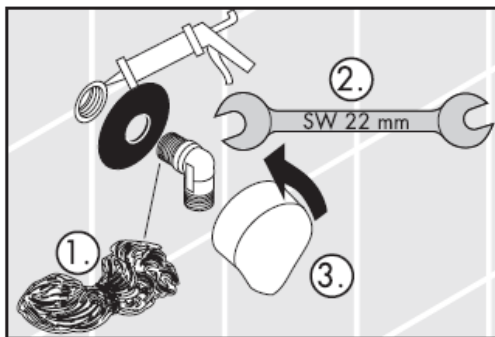
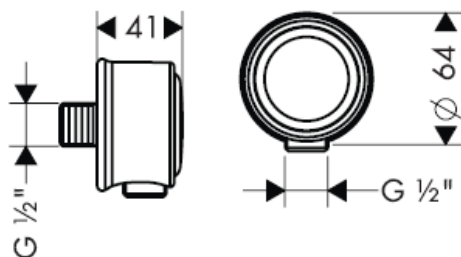
# AXOR<sup>®</sup>

hansgrohe

**Starck 27451XXX**  
**Steel 35884800/35888800**



**Montreux 16884XXX**

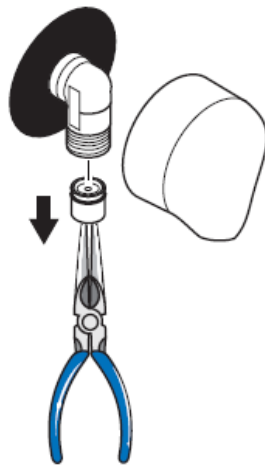


**Fixfit Deluxe 27451XXX/35888800/16884XXX**

DVGW Reg.-Nr.: DW-6511AT2271

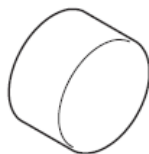


**Achtung!** Die Rückflussverhinderer müssen gemäß DIN 1988 einmal jährlich auf ihre Funktion geprüft werden.



**hansgrohe**

# Instructions de montage



**Steel Fixfit**  
35884800



**Steel Fixfit Deluxe**  
35888800  
**Starck Fixfit Deluxe**  
27451XXX



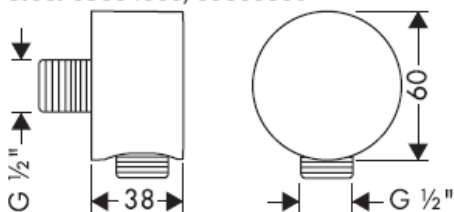
**Montreux  
Fixfit Deluxe**  
16884XXX

Avec dispositif anti-retour

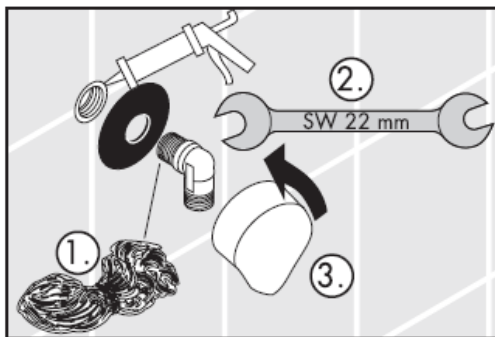
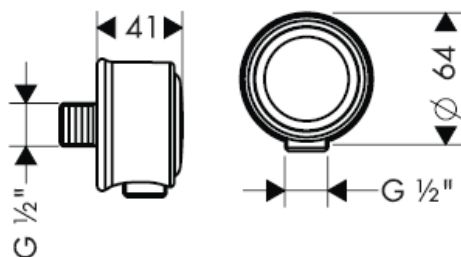
# AXOR<sup>®</sup>

**hansgrohe**

**Starck 27451XXX**  
**Steel 35884800/35888800**



**Montreux 16884XXX**

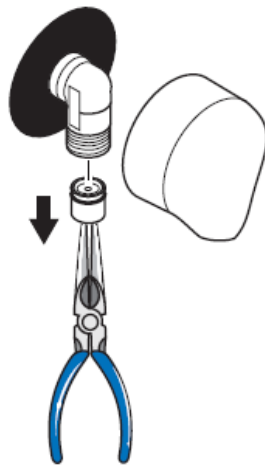


**Fixfit Deluxe 27451XXX/35888800/16884XXX**

DVGW Reg.-Nr.: DW-6511AT2271

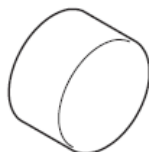


**Attention!** Les clapets anti-retour doivent être vérifié une fois par an.



**hansgrohe**

# assembly instructions



**Steel Fixfit**  
35884800



**Steel Fixfit Deluxe**  
35888800  
**Starck Fixfit Deluxe**  
27451XXX



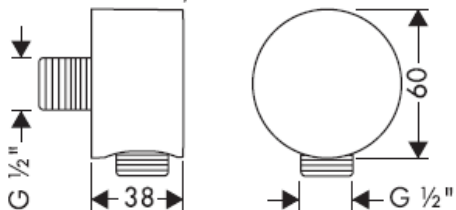
**Montreux  
Fixfit Deluxe**  
16884XXX

anti-pollution function

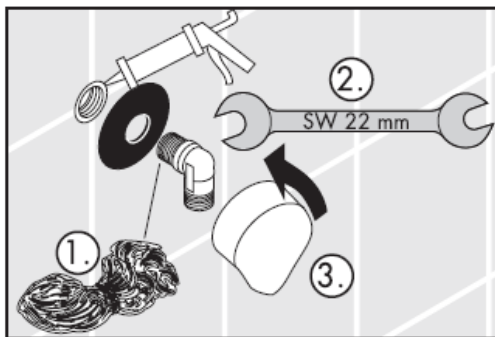
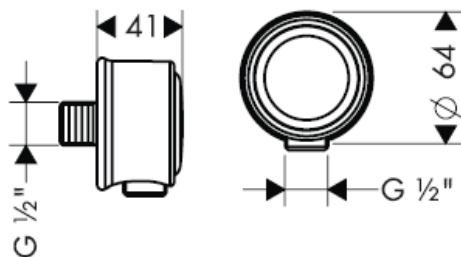
# AXOR<sup>®</sup>

**hansgrohe**

**Starck 27451XXX**  
**Steel 35884800/35888800**



**Montreux 16884XXX**

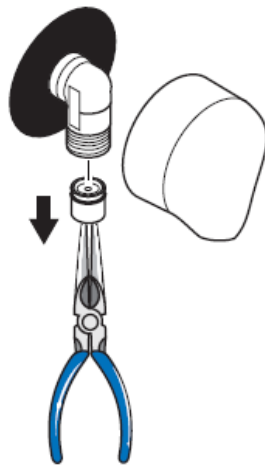


**Fixfit Deluxe 27451XXX/35888800/16884XXX**

DVGW Reg.-Nr.: DW-6511AT2271

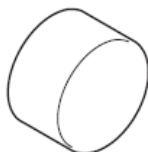


**Important!** The non return valves must be checked once a year.

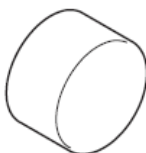


**hansgrohe**

# Istruzioni per Installazione



**Steel Fixfit**  
35884800



**Steel Fixfit Deluxe**  
35888800  
**Starck Fixfit Deluxe**  
27451XXX



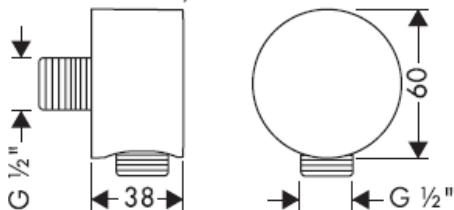
**Montreux  
Fixfit Deluxe**  
16884XXX

Sicurezza antiriflusso

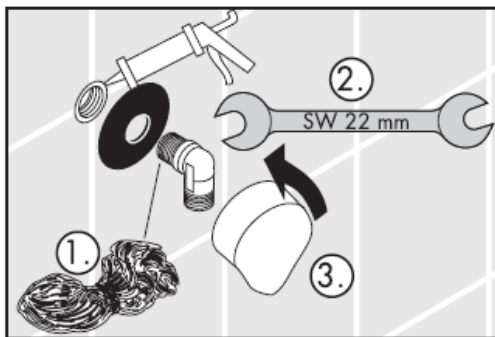
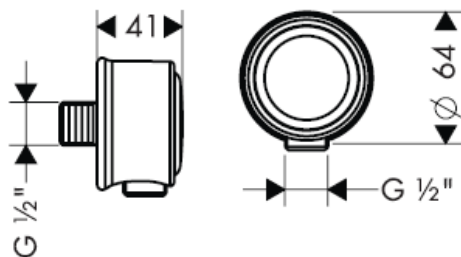
# AXOR<sup>®</sup>

**hansgrohe**

**Starck 27451XXX**  
**Steel 35884800/35888800**



**Montreux 16884XXX**

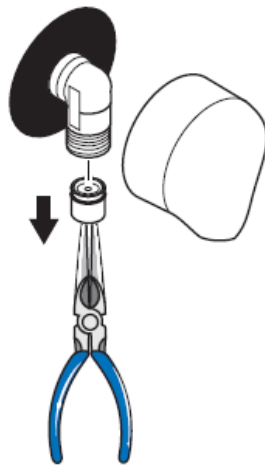


**Fixfit Deluxe 27451XXX/35888800/16884XXX**

DVGW Reg.-Nr.: DW-6511AT2271



**Attenzione!** La valvola di non ritorno deve essere controllata una volta all'anno.



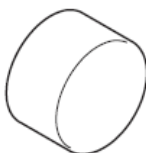
**hansgrohe**



# Instrucciones de montaje



**Steel Fixfit**  
35884800



**Steel Fixfit Deluxe**  
35888800  
**Starck Fixfit Deluxe**  
27451XXX



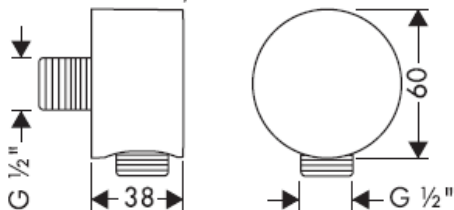
**Montreux  
Fixfit Deluxe**  
16884XXX

Seguro contra el retorno

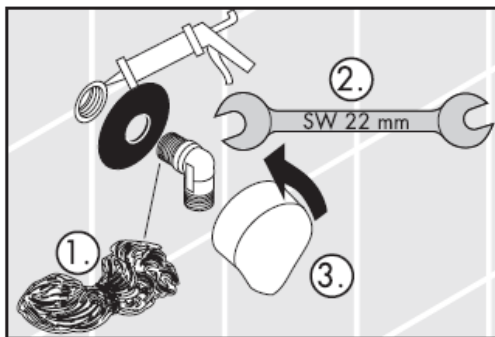
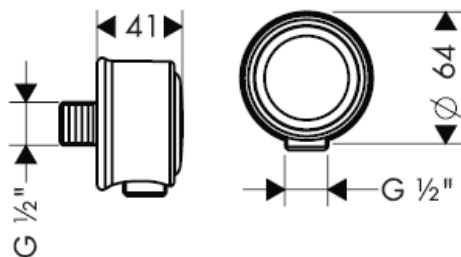
# AXOR<sup>®</sup>

**hansgrohe**

**Starck 27451XXX**  
**Steel 35884800/35888800**



**Montreux 16884XXX**

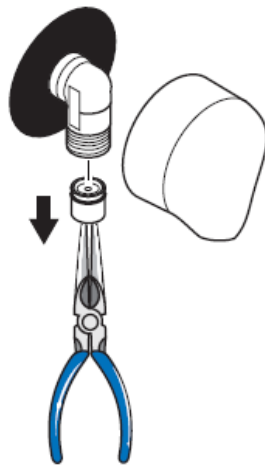


**Fixfit Deluxe 27451XXX/35888800/16884XXX**

DVGW Reg.-Nr.: DW-6511AT2271

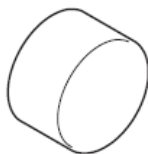


**¡Atención!** Las válvulas anti-retorno se han de revisar una vez al año.

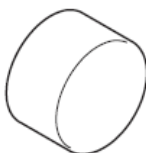


**hansgrohe**

# Handleiding



**Steel Fixfit**  
35884800



**Steel Fixfit Deluxe**  
35888800  
**Starck Fixfit Deluxe**  
27451XXX



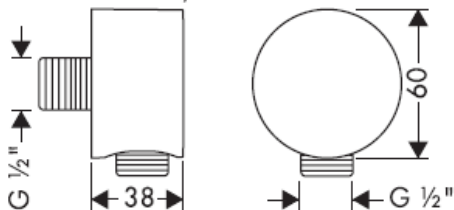
**Montreux  
Fixfit Deluxe**  
16884XXX

Beveiligd tegen terugstromen

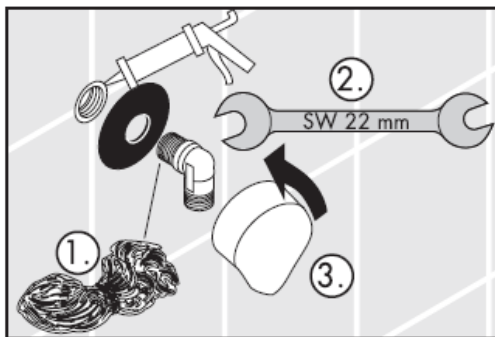
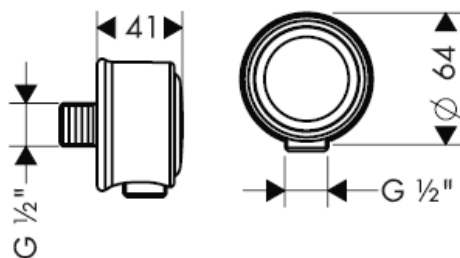
# AXOR<sup>®</sup>

hansgrohe

**Starck 27451XXX**  
**Steel 35884800/35888800**



**Montreux 16884XXX**

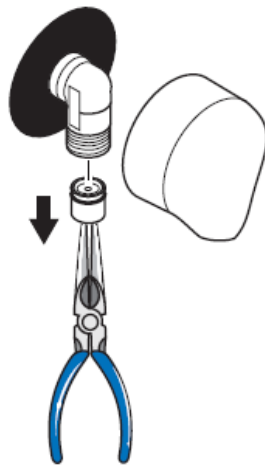


**Fixfit Deluxe 27451XXX/35888800/16884XXX**

DVGW Reg.-Nr.: DW-6511AT2271



**Attentie!** Het functioneren van de terugslagklep-pen moet jaarlijks worden getest.



**hansgrohe**

# Monteringsvejledning



**Steel Fixfit**  
35884800



**Steel Fixfit Deluxe**  
35888800  
**Starck Fixfit Deluxe**  
27451XXX



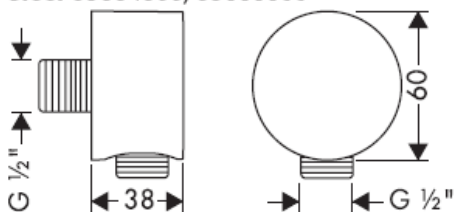
**Montreux  
Fixfit Deluxe**  
16884XXX

Med indbygget kontraventil

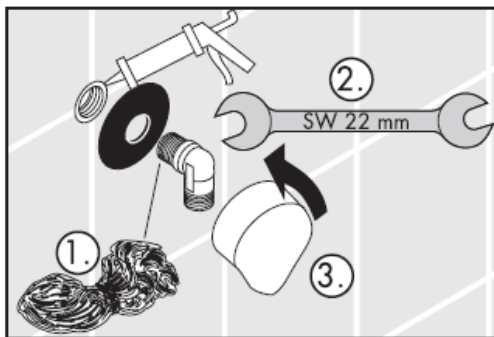
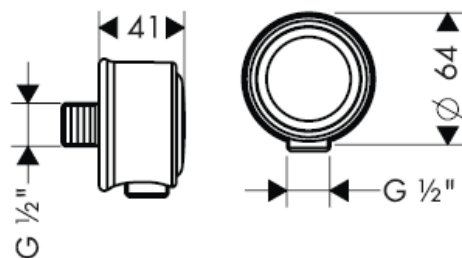
# AXOR<sup>®</sup>

hansgrohe

**Starck 27451XXX**  
**Steel 35884800/35888800**



**Montreux 16884XXX**

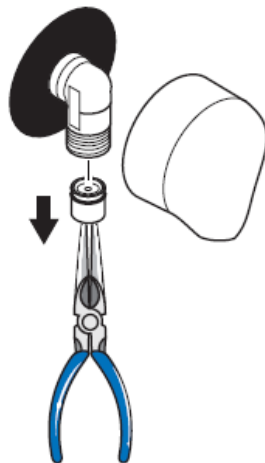


**Fixfit Deluxe 27451XXX/35888800/16884XXX**

DVGW Reg.-Nr.: DW-6511AT2271

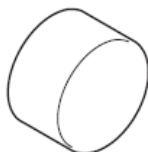


**Advarsel!** Kontraventilen skal afprøves en gang om året.

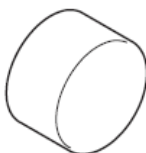


**hansgrohe**

# Manual de Instalação



**Steel Fixfit**  
35884800



**Steel Fixfit Deluxe**  
35888800  
**Starck Fixfit Deluxe**  
27451XXX



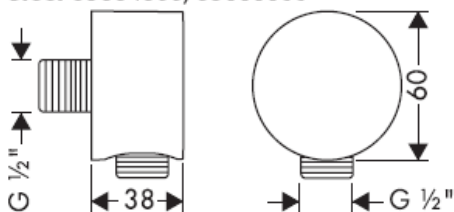
**Montreux  
Fixfit Deluxe**  
16884XXX

Função anti-retorno e anti-vácuo

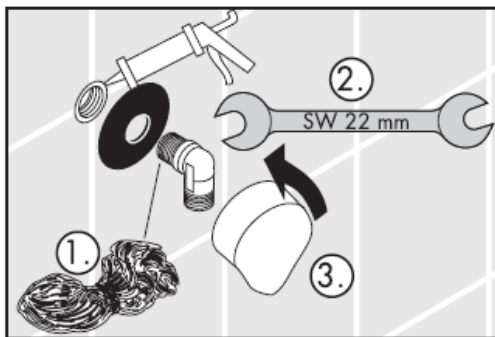
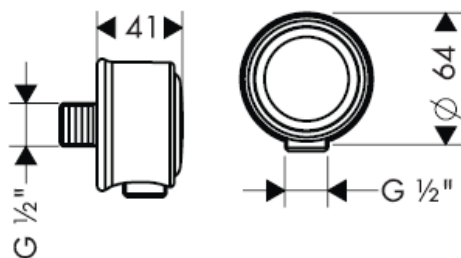
# AXOR<sup>®</sup>

**hansgrohe**

**Starck 27451XXX**  
**Steel 35884800/35888800**



**Montreux 16884XXX**

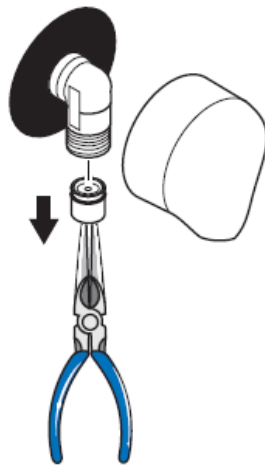


**Fixfit Deluxe 27451XXX/35888800/16884XXX**

DVGW Reg.-Nr.: DW-6511AT2271



**Atenção!** As válvulas anti-retorno têm que ser verificadas uma vez por ano.



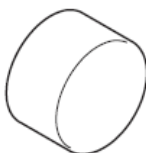
**hansgrohe**



# Instrukcja montażu



**Steel Fixfit**  
35884800



**Steel Fixfit Deluxe**  
35888800  
**Starck Fixfit Deluxe**  
27451XXX



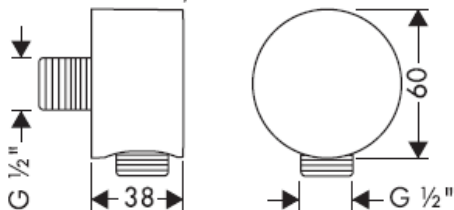
**Montreux  
Fixfit Deluxe**  
16884XXX

Samoistnie zabezpieczony przed  
przepływem zwrrotnym

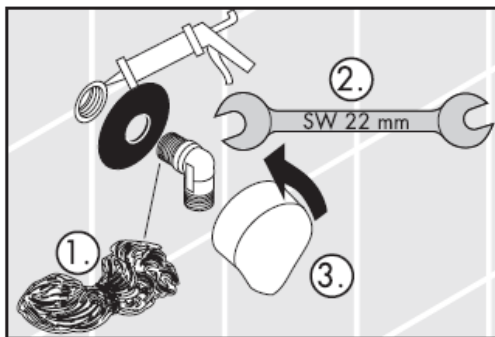
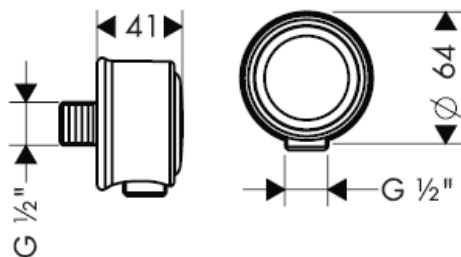
# AXOR<sup>®</sup>

**hansgrohe**

**Starck 27451XXX**  
**Steel 35884800/35888800**



**Montreux 16884XXX**

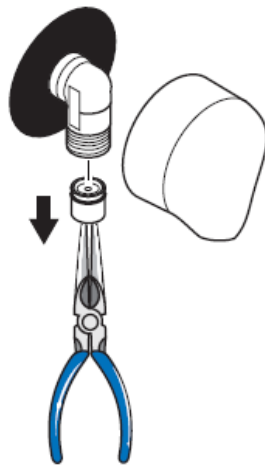


**Fixfit Deluxe 27451XXX/35888800/16884XXX**

DVGW Reg.-Nr.: DW-6511AT2271

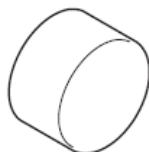


**Uwaga!** Zgodnie z normą DIN 1988 działanie zabezpieczeń przepływu zwrotnego należy skontrolować raz w roku.

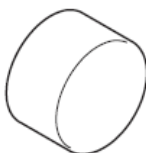


**hansgrohe**

# Montážní návod



**Steel Fixfit**  
35884800



**Steel Fixfit Deluxe**  
35888800  
**Starck Fixfit Deluxe**  
27451XXX



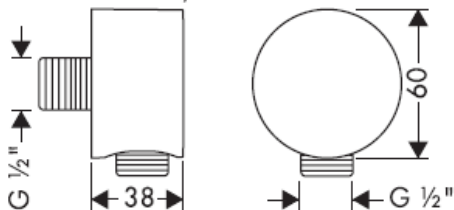
**Montreux  
Fixfit Deluxe**  
16884XXX

Vlastní jištění proti zpětnému nasátí.

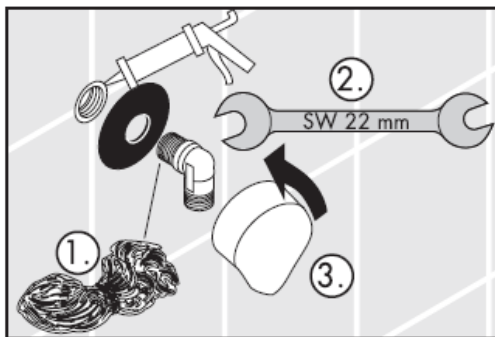
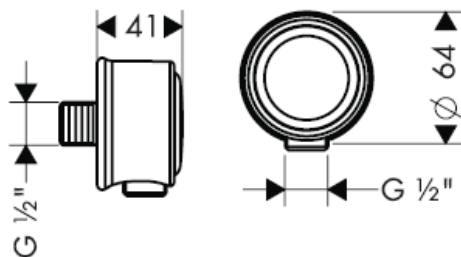
# AXOR<sup>®</sup>

**hansgrohe**

**Starck 27451XXX**  
**Steel 35884800/35888800**



**Montreux 16884XXX**

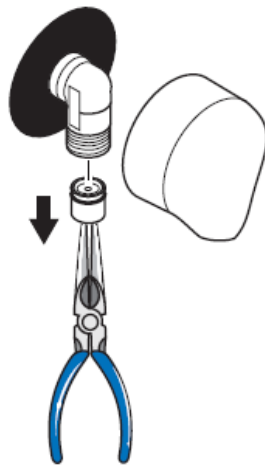


**Fixfit Deluxe 27451XXX/35888800/16884XXX**

DVGW Reg.-Nr.: DW-6511AT2271

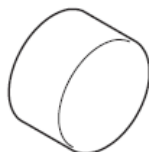


**Pozor!** U jistění proti zpětnému nasátí musí být podle normy DIN 1988 jednou ročně přezkoušena jeho funkce.



**hansgrohe**

# Montážny návod



**Steel Fixfit**  
35884800



**Steel Fixfit Deluxe**  
35888800  
**Starck Fixfit Deluxe**  
27451XXX



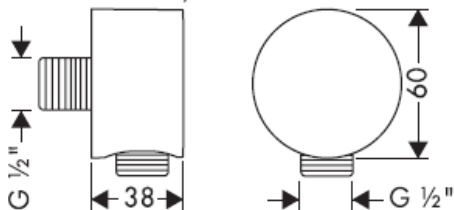
**Montreux  
Fixfit Deluxe**  
16884XXX

Vlastná poistka proti spätnému nasatiu.

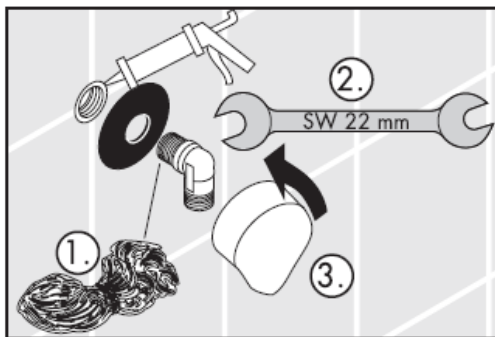
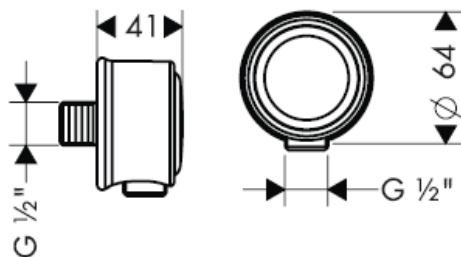
# AXOR<sup>®</sup>

**hansgrohe**

**Starck 27451XXX**  
**Steel 35884800/35888800**



**Montreux 16884XXX**

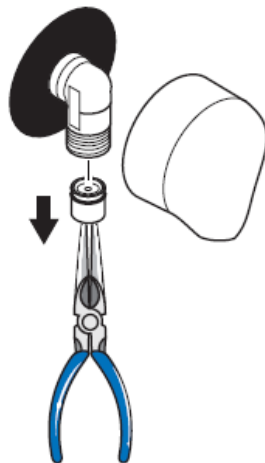


**Fixfit Deluxe 27451XXX/35888800/16884XXX**

DVGW Reg.-Nr.: DW-6511AT2271



**Pozor!** Pri poistke proti spätnému nasatiu musí byť podľa normy DIN 1988 raz ročne preskúšaná jej funkčnosť.

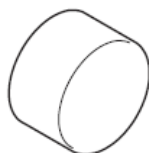


**hansgrohe**

Hansgrohe · Postfach 1145 · D-77761 Schiltach · Telefon +49 (0) 78 36/51-1282 · Telefax +49 (0) 7836/511440  
 E-Mail: info@hansgrohe.com · Internet: www.hansgrohe.com

01/2006  
 9.08962.03  
 Slovensky

# 组装说明



**Steel Fixfit**  
35884800



**Steel Fixfit Deluxe**  
35888800  
**Starck Fixfit Deluxe**  
27451XXX



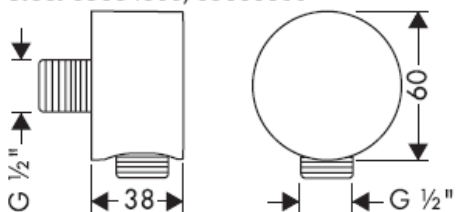
**Montreux  
Fixfit Deluxe**  
16884XXX

自动防止回流

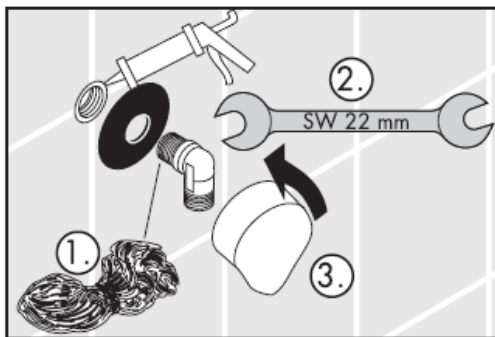
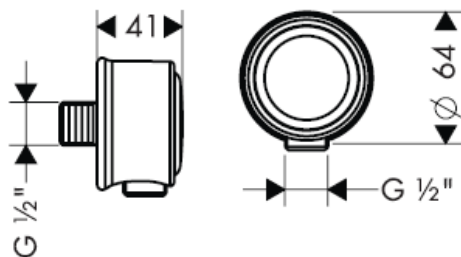
# AXOR®

hansgrohe

**Starck 27451XXX**  
**Steel 35884800/35888800**



**Montreux 16884XXX**

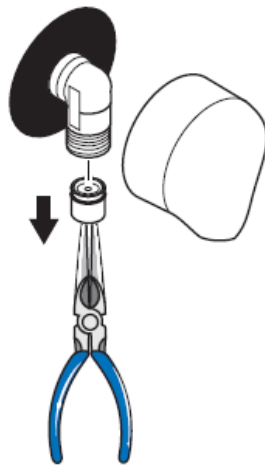


**Fixfit Deluxe 27451XXX/35888800/16884XXX**

DVGW Reg.-Nr.: DW-6511AT2271



**注意！** 每年必须按照DIN 1988对单向阀的功能进行一次检查。



**hansgrohe**

Hansgrohe · Postfach 1145 · D-77761 Schiltach · Telefon +49 (0) 78 36/51-1282 · Telefax +49 (0) 7836/511440  
 E-Mail: info@hansgrohe.com · Internet: www.hansgrohe.com

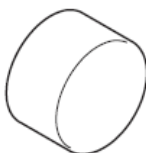
01/2006  
 9.08962.03  
 中文



# Инструкция по монтажу



**Steel Fixfit**  
35884800



**Steel Fixfit Deluxe**  
35888800  
**Starck Fixfit Deluxe**  
27451XXX



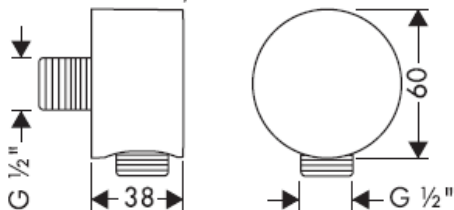
**Montreux  
Fixfit Deluxe**  
16884XXX

укомплектован клапаном обратного тока  
воды

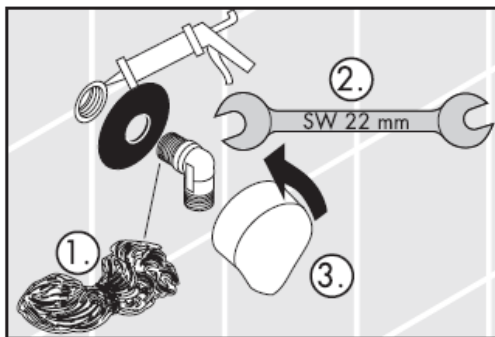
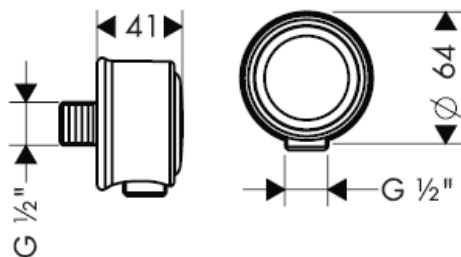
# AXOR<sup>®</sup>

**hansgrohe**

**Starck 27451XXX**  
**Steel 35884800/35888800**



**Montreux 16884XXX**

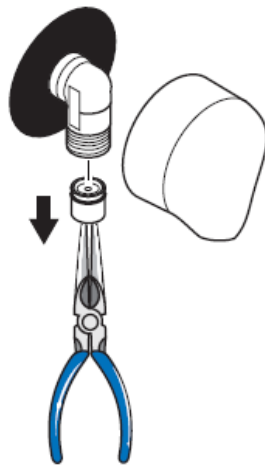


**Fixfit Deluxe 27451XXX/35888800/16884XXX**

DVGW Reg.-Nr.: DW-6511AT2271



**ВНИМАНИЕ!** клапан обратного тока воды должен проверяться  
 не реже одного раза в год

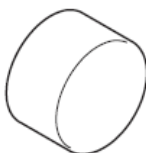


**hansgrohe**

# Szerelési útmutató



**Steel Fixfit**  
35884800



**Steel Fixfit Deluxe**  
35888800  
**Starck Fixfit Deluxe**  
27451XXX



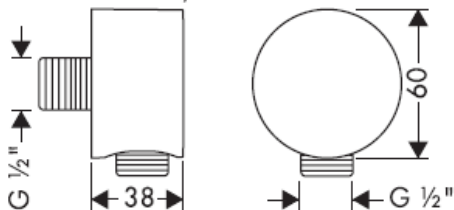
**Montreux  
Fixfit Deluxe**  
16884XXX

Visszafolyás gátlóval

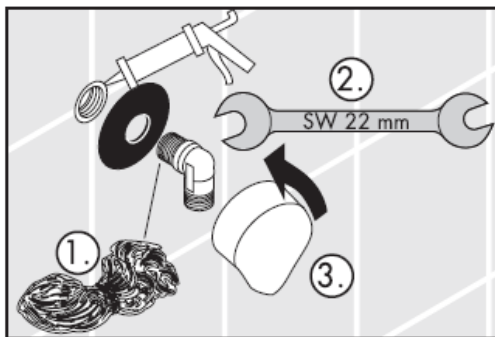
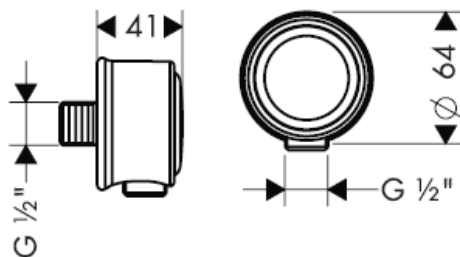
# AXOR<sup>®</sup>

**hansgrohe**

**Starck 27451XXX**  
**Steel 35884800/35888800**



**Montreux 16884XXX**

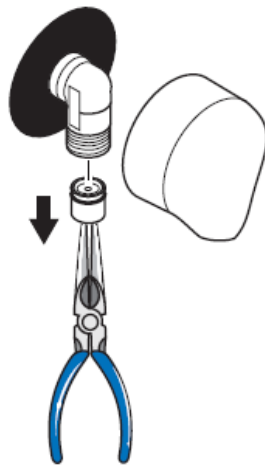


**Fixfit Deluxe 27451XXX/35888800/16884XXX**

DVGW Reg.-Nr.: DW-6511AT2271



**Figyelem!** A visszafolyásgátlók működését a DIN 1988 szerint évente egyszer ellenőrizni kell.



**hansgrohe**

Hansgrohe · Postfach 1145 · D-77761 Schiltach · Telefon +49 (0) 78 36/51-1282 · Telefax +49 (0) 7836/511440  
 E-Mail: info@hansgrohe.com · Internet: www.hansgrohe.com

01/2006  
 9.08962.03  
 Magyar

# Asennusohje



**Steel Fixfit**  
35884800



**Steel Fixfit Deluxe**  
35888800  
**Starck Fixfit Deluxe**  
27451XXX



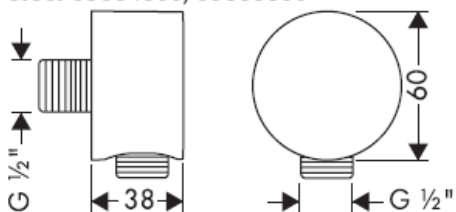
**Montreux  
Fixfit Deluxe**  
16884XXX

Estää itsestään paluuvirtauksen

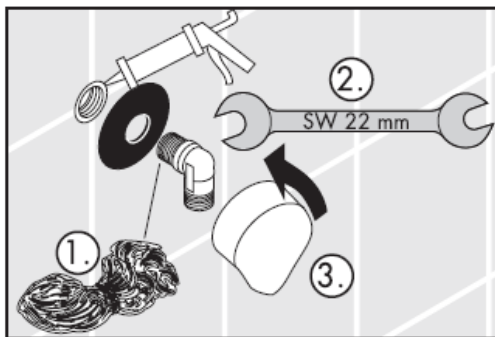
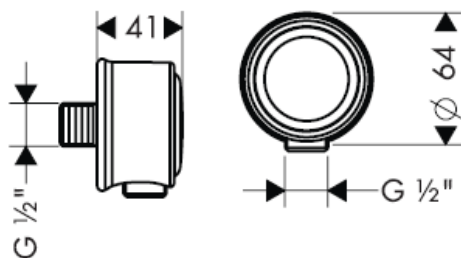
# AXOR<sup>®</sup>

**hansgrohe**

**Starck 27451XXX**  
**Steel 35884800/35888800**



**Montreux 16884XXX**

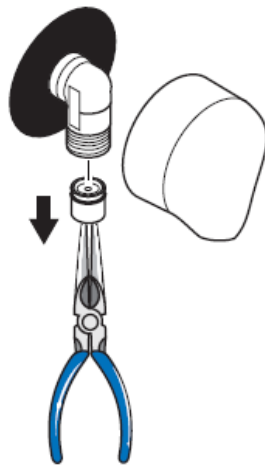


**Fixfit Deluxe 27451XXX/35888800/16884XXX**

DVGW Reg.-Nr.: DW-6511AT2271

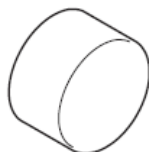


**Huomio!** Vastaventtiilin toiminta on normin DIN 1988 mukaan tarkastettava vuosittaan.

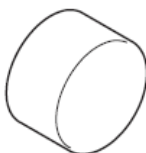


**hansgrohe**

# Monteringsanvisning



**Steel Fixfit**  
35884800



**Steel Fixfit Deluxe**  
35888800  
**Starck Fixfit Deluxe**  
27451XXX



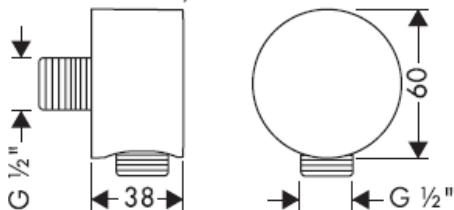
**Montreux  
Fixfit Deluxe**  
16884XXX

Självspärr mot återflöde

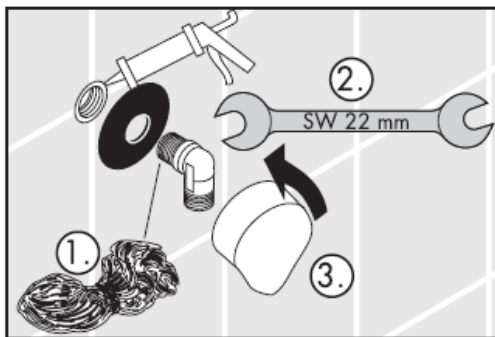
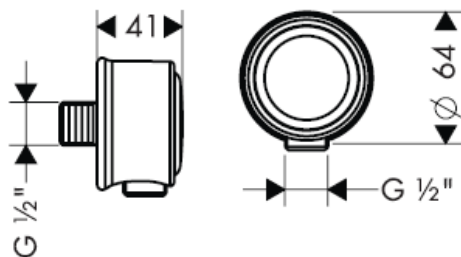
# AXOR<sup>®</sup>

**hansgrohe**

**Starck 27451XXX**  
**Steel 35884800/35888800**



**Montreux 16884XXX**

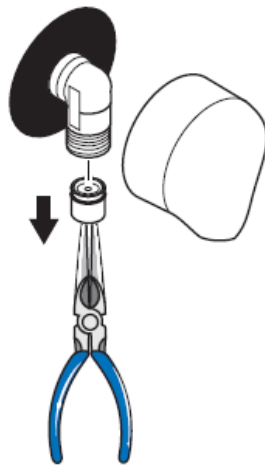


**Fixfit Deluxe 27451XXX/35888800/16884XXX**

DVGW Reg.-Nr.: DW-6511AT2271



**OBS!** Backventilernas funktion måste kontrolleras en gång varje år enligt DIN 1988.



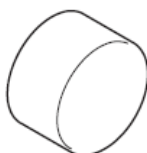
**hansgrohe**



# Montavimo instrukcijos



**Steel Fixfit**  
35884800



**Steel Fixfit Deluxe**  
35888800  
**Starck Fixfit Deluxe**  
27451XXX



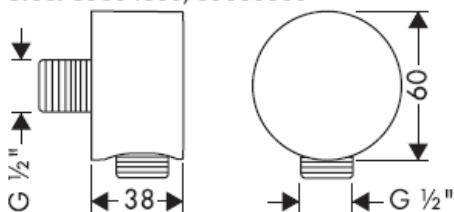
**Montreux  
Fixfit Deluxe**  
16884XXX

Su atbuliniu vožtuvu

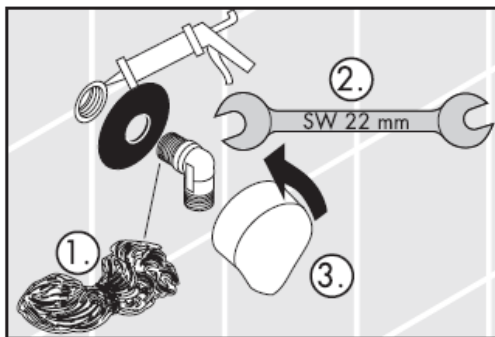
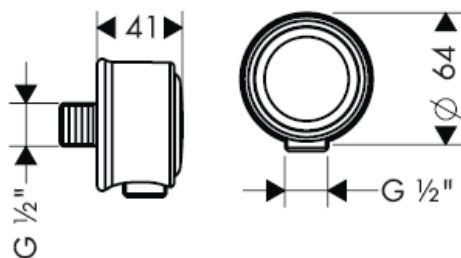
# AXOR<sup>®</sup>

**hansgrohe**

**Starck 27451XXX**  
**Steel 35884800/35888800**



**Montreux 16884XXX**

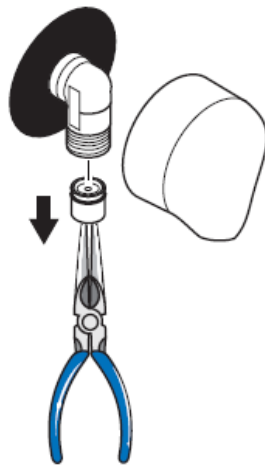


**Fixfit Deluxe 27451XXX/35888800/16884XXX**

DVGW Reg.-Nr.: DW-6511AT2271



**Dėmesio!** Atbulinių vožtuvėlių funkcija, remiantis DIN 1988, vieną kartą metuose privalo būti patikrinta.

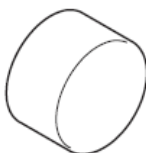


**hansgrohe**

# Uputstva za instalaciju



**Steel Fixfit**  
35884800



**Steel Fixfit Deluxe**  
35888800  
**Starck Fixfit Deluxe**  
27451XXX



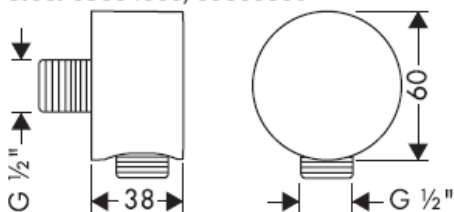
**Montreux  
Fixfit Deluxe**  
16884XXX

Funkcije samo-čišćenja

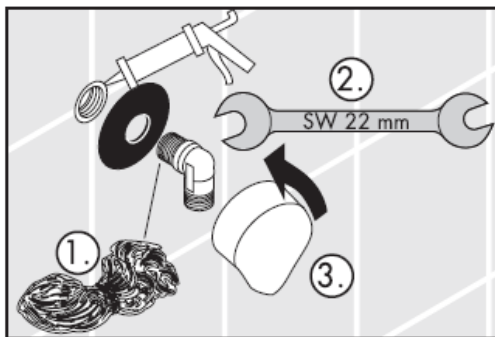
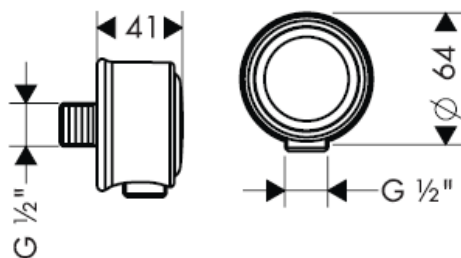
# AXOR<sup>®</sup>

hansgrohe

**Starck 27451XXX**  
**Steel 35884800/35888800**



**Montreux 16884XXX**

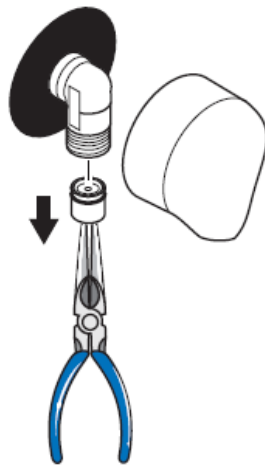


**Fixfit Deluxe 27451XXX/35888800/16884XXX**

DVGW Reg.-Nr.: DW-6511AT2271

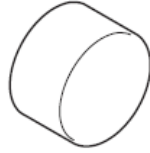


**Pažnja!** Nepovratni ventil se mora provjeravati jednom godisnje prema standardu DIN 1988

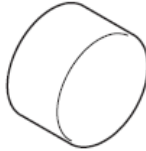


**hansgrohe**

# Montaj kılavuzu



**Steel Fixfit**  
35884800



**Steel Fixfit Deluxe**  
35888800  
**Starck Fixfit Deluxe**  
27451XXX



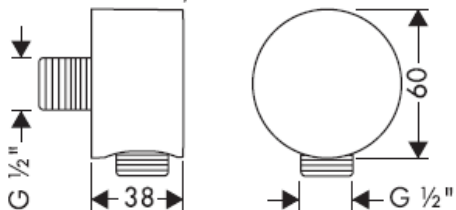
**Montreux  
Fixfit Deluxe**  
16884XXX

Geri emme önleyici

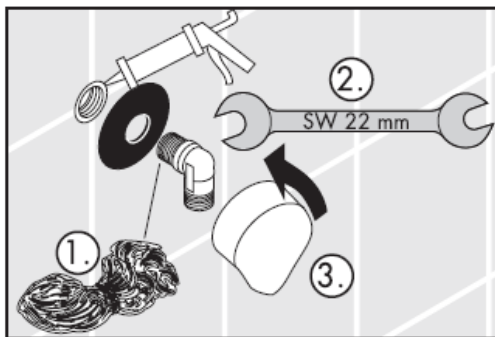
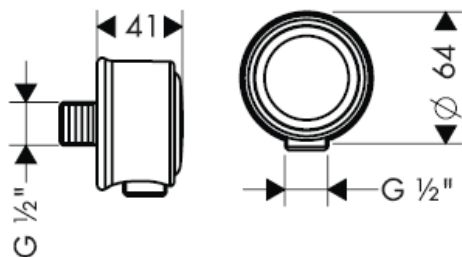
# AXOR®

hansgrohe

**Starck 27451XXX**  
**Steel 35884800/35888800**



**Montreux 16884XXX**

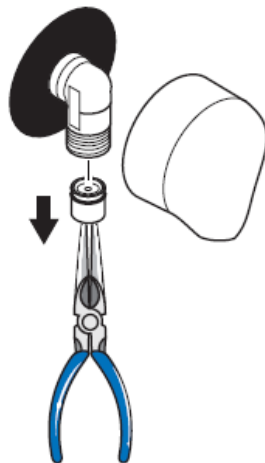


**Fixfit Deluxe 27451XXX/35888800/16884XXX**

DVGW Reg.-Nr.: DW-6511AT2271

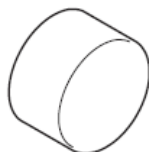


**Önemli!** Çek valflara DIN 1988'e göre yılda bir kez çalışma kontrolü yapılmalıdır.

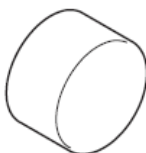


**hansgrohe**

# Instrucțiuni de montare



**Steel Fixfit**  
35884800



**Steel Fixfit Deluxe**  
35888800  
**Starck Fixfit Deluxe**  
27451XXX



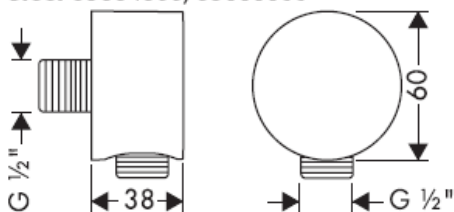
**Montreux  
Fixfit Deluxe**  
16884XXX

Asigurat contra scurgere înapoi

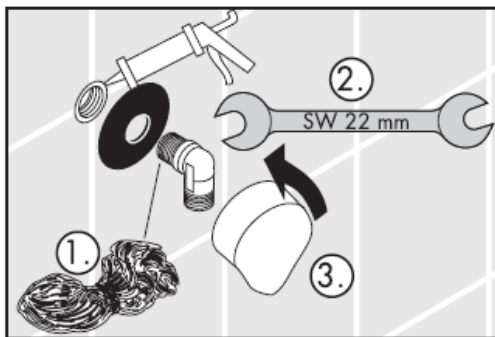
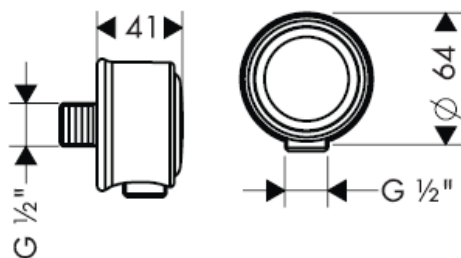
# AXOR<sup>®</sup>

**hansgrohe**

**Starck 27451XXX**  
**Steel 35884800/35888800**



**Montreux 16884XXX**

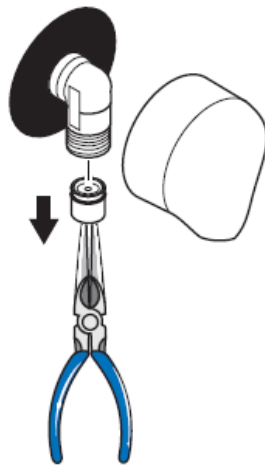


**Fixfit Deluxe 27451XXX/35888800/16884XXX**

DVGW Reg.-Nr.: DW-6511AT2271



**Atenție!** Supapele antiretur trebuie verificate anual conform DIN 1988.



**hansgrohe**

Hansgrohe · Postfach 1145 · D-77761 Schiltach · Telefon +49 (0) 78 36/51-1282 · Telefax +49 (0) 7836/511440  
E-Mail: info@hansgrohe.com · Internet: www.hansgrohe.com

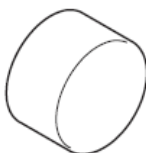
01/2006  
9.08962.03  
România



# Οδηγία συναρμολόγησης



**Steel Fixfit**  
35884800



**Steel Fixfit Deluxe**  
35888800  
**Starck Fixfit Deluxe**  
27451XXX



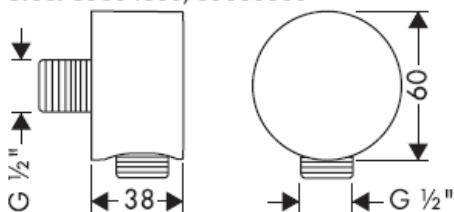
**Montreux  
Fixfit Deluxe**  
16884XXX

Περιλαμβάνει βαλβίδα αντεπιστροφής.

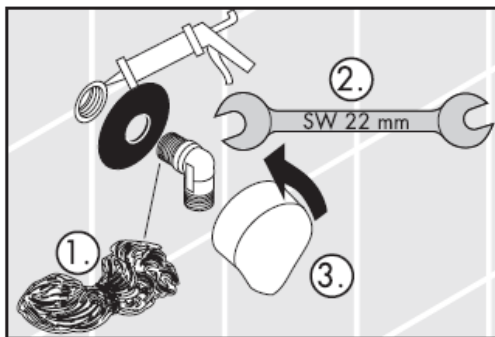
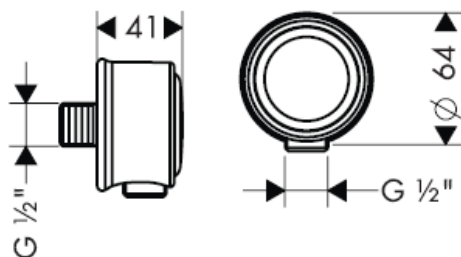
# AXOR<sup>®</sup>

**hansgrohe**

**Starck 27451XXX**  
**Steel 35884800/35888800**



**Montreux 16884XXX**

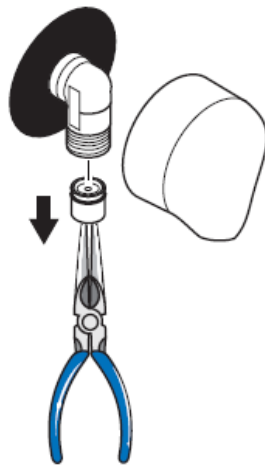


**Fixfit Deluxe 27451XXX/35888800/16884XXX**

DVGW Reg.-Nr.: DW-6511AT2271



**Προσοχή!** Οι βαλβίδες αντεπιστροφής πρέπει να ελέγχονται μια φορά το χρόνο ως προς τη λειτουργία τους, σύμφωνα με το πρότυπο DIN 1988.



**hansgrohe**

Hansgrohe · Postfach 1145 · D-77761 Schiltach · Telefon +49 (0) 78 36/51-1282 · Telefax +49 (0) 7836/511440  
E-Mail: info@hansgrohe.com · Internet: www.hansgrohe.com

01/2006  
9.08962.03  
Ελληνικά

# تعليمات التجميع



**Steel Fixfit**  
35884800



**Steel Fixfit Deluxe**  
35888800  
**Starck Fixfit Deluxe**  
27451XXX



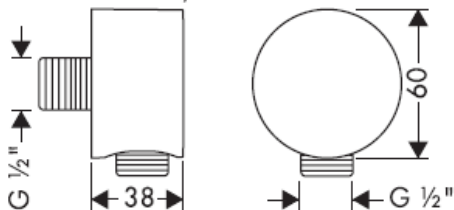
**Montreux  
Fixfit Deluxe**  
16884XXX

التأمين ضد التدفق العكسي

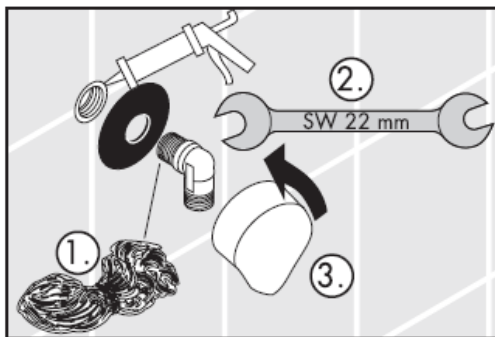
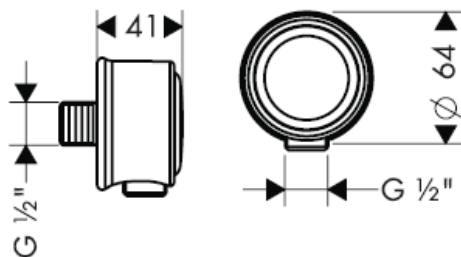
# AXOR®

**hansgrohe**

**Starck 27451XXX**  
**Steel 35884800/35888800**



**Montreux 16884XXX**

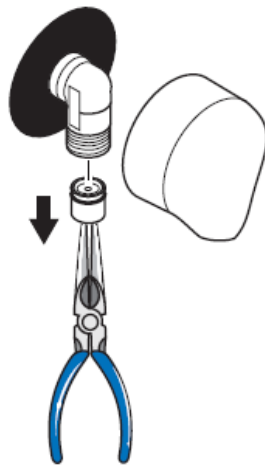


**Fixfit Deluxe 27451XXX/35888800/16884XXX**

DVGW Reg.-Nr.: DW-6511AT2271



يجب فحص صمامات عدم الرجوع مرة واحدة سنويا. تنبيه!



**hansgrohe**

Hansgrohe · Postfach 1145 · D-77761 Schiltach · Telefon +49 (0) 78 36/51-1282 · Telefax +49 (0) 7836/511440  
 E-Mail: info@hansgrohe.com · Internet: www.hansgrohe.com

01/2006  
 9.08962.03

عربي

# Navodila za montažo



**Steel Fixfit**  
35884800



**Steel Fixfit Deluxe**  
35888800  
**Starck Fixfit Deluxe**  
27451XXX



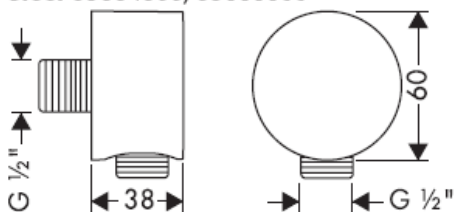
**Montreux  
Fixfit Deluxe**  
16884XXX

Zaščita proti povratnemu toku

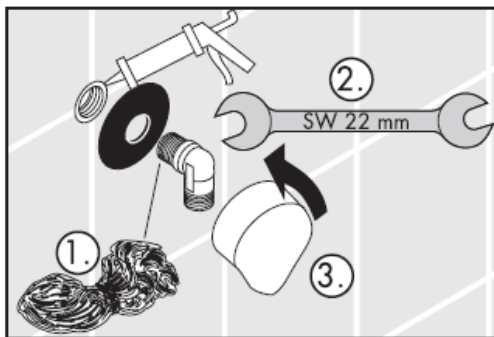
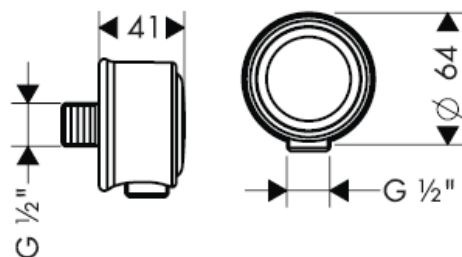
# AXOR<sup>®</sup>

**hansgrohe**

**Starck 27451XXX**  
**Steel 35884800/35888800**



**Montreux 16884XXX**

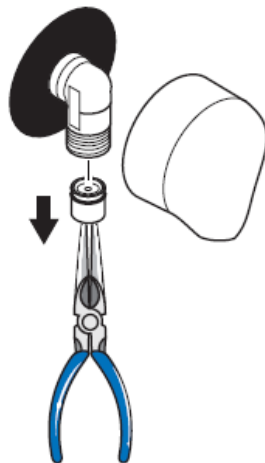


**Fixfit Deluxe 27451XXX/35888800/16884XXX**

DVGW Reg.-Nr.: DW-6511AT2271



**Pozor!** Delovanje protipovratnega ventila je potrebno v skladu z DIN 1988 enkrat letno testirati.

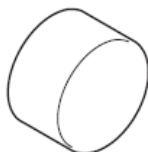


**hansgrohe**

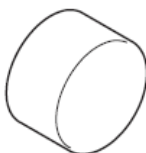
Hansgrohe · Postfach 1145 · D-77761 Schiltach · Telefon +49 (0) 78 36/51-1282 · Telefax +49 (0) 7836/511440  
 E-Mail: info@hansgrohe.com · Internet: www.hansgrohe.com

01/2006  
 9.08962.03  
 Slovenski

# Paigaldusjuhend



**Steel Fixfit**  
35884800



**Steel Fixfit Deluxe**  
35888800  
**Starck Fixfit Deluxe**  
27451XXX



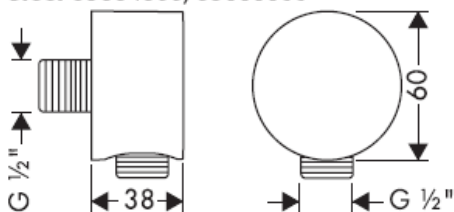
**Montreux  
Fixfit Deluxe**  
16884XXX

tagasivooluklapp

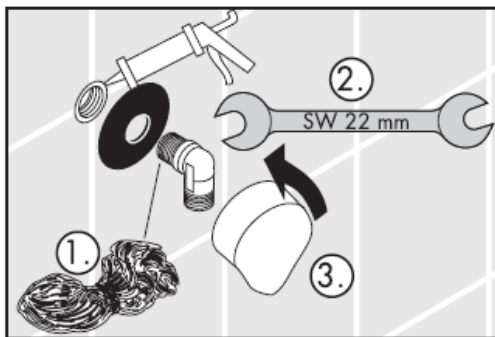
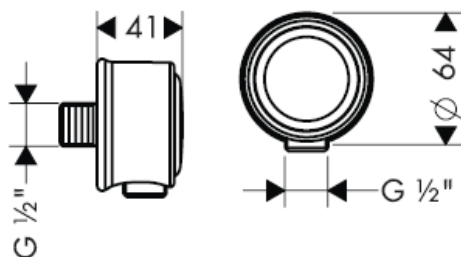
# AXOR<sup>®</sup>

**hansgrohe**

**Starck 27451XXX**  
**Steel 35884800/35888800**



**Montreux 16884XXX**

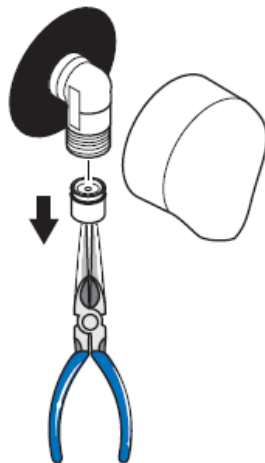


**Fixfit Deluxe 27451XXX/35888800/16884XXX**

DVGW Reg.-Nr.: DW-6511AT2271



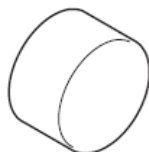
**Tähelepanu!** Tagasilöögiklappide toimimist tuleb kontrollida vastavalt standardile DIN 1988 kord aastas.



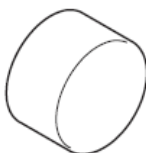
**hansgrohe**



# Montāžas instrukcija



**Steel Fixfit**  
35884800



**Steel Fixfit Deluxe**  
35888800  
**Starck Fixfit Deluxe**  
27451XXX



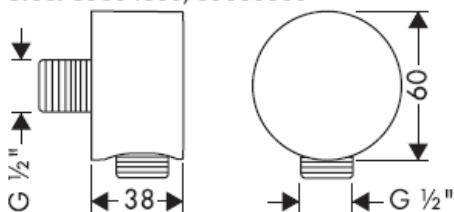
**Montreux  
Fixfit Deluxe**  
16884XXX

Drošības vārsts

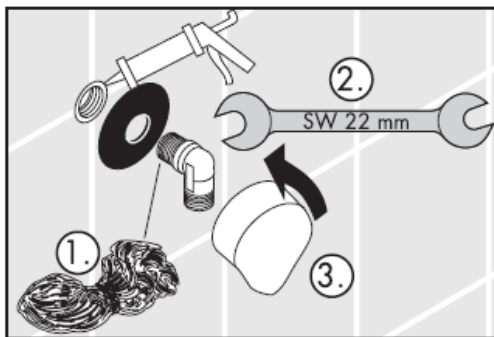
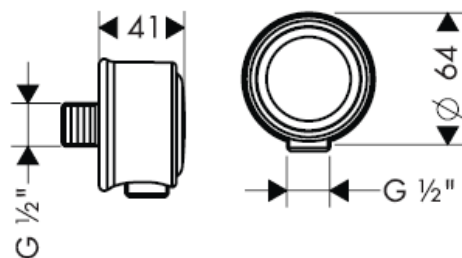
# AXOR<sup>®</sup>

**hansgrohe**

**Starck 27451XXX**  
**Steel 35884800/35888800**



**Montreux 16884XXX**

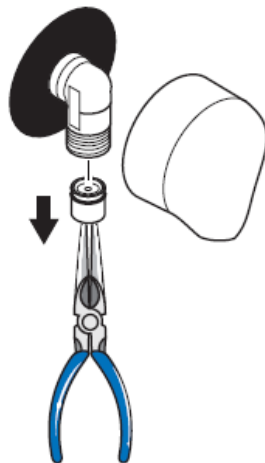


**Fixfit Deluxe 27451XXX/35888800/16884XXX**

DVGW Reg.-Nr.: DW-6511AT2271



**Uzmanību!** Reizi gadā jāpārbauda pretvārsti atbilstoši DIN 1988.

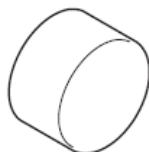


**hansgrohe**

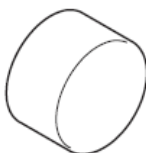
Hansgrohe · Postfach 1145 · D-77761 Schiltach · Telefon +49 (0) 78 36/51-1282 · Telefax +49 (0) 7836/511440  
 E-Mail: info@hansgrohe.com · Internet: www.hansgrohe.com

01/2006  
 9.08962.03  
 Latviski

# Uputstvo za montažu



**Steel Fixfit**  
35884800



**Steel Fixfit Deluxe**  
35888800  
**Starck Fixfit Deluxe**  
27451XXX



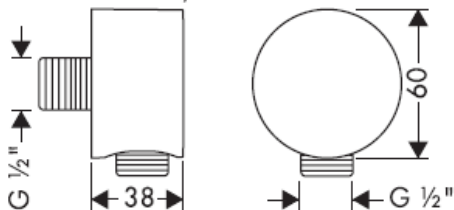
**Montreux  
Fixfit Deluxe**  
16884XXX

Zaštita od povratnog toka

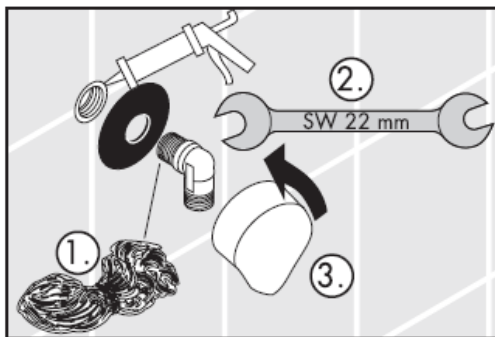
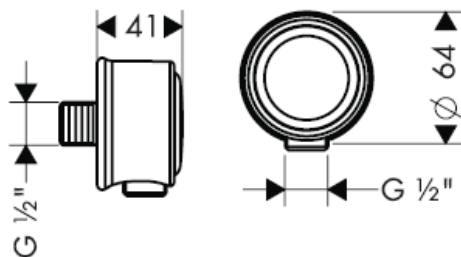
# AXOR<sup>®</sup>

**hansgrohe**

**Starck 27451XXX**  
**Steel 35884800/35888800**



**Montreux 16884XXX**

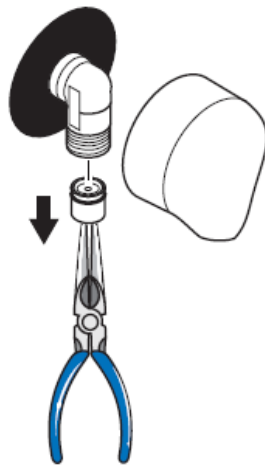


**Fixfit Deluxe 27451XXX/35888800/16884XXX**

DVGW Reg.-Nr.: DW-6511AT2271



**Pažnja!** Nepovratni ventil se mora proveravati jednom godišnje prema standardu DIN 1988.



**hansgrohe**

# Montasjeveiledning



**Steel Fixfit**  
35884800



**Steel Fixfit Deluxe**  
35888800  
**Starck Fixfit Deluxe**  
27451XXX



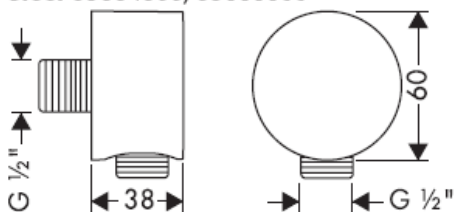
**Montreux  
Fixfit Deluxe**  
16884XXX

Egensikker mot tilbakeflyt

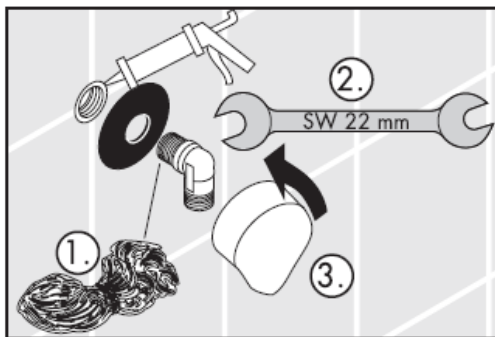
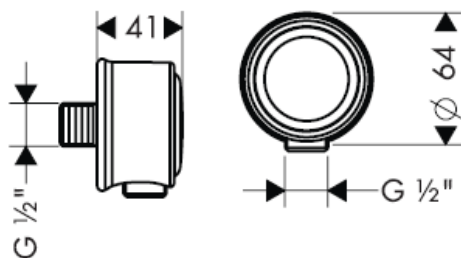
# AXOR<sup>®</sup>

**hansgrohe**

**Starck 27451XXX**  
**Steel 35884800/35888800**



**Montreux 16884XXX**

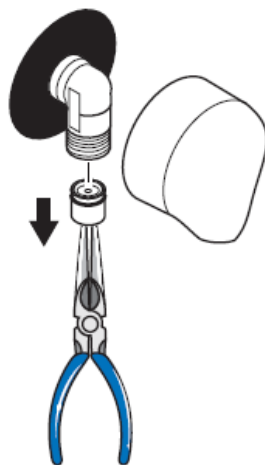


**Fixfit Deluxe 27451XXX/35888800/16884XXX**

DVGW Reg.-Nr.: DW-6511AT2271

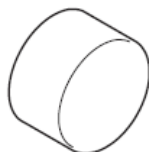


**Obs!** I henhold til DIN 1988 skal funksjonen til returløpssperren sjekkes en gang i året.

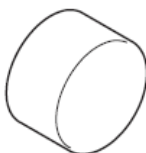


**hansgrohe**

# РЪКОВОДСТВО ЗА МОНТАЖ



**Steel Fixfit**  
35884800



**Steel Fixfit Deluxe**  
35888800  
**Starck Fixfit Deluxe**  
27451XXX



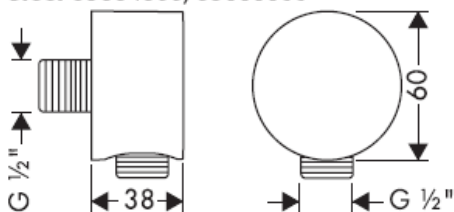
**Montreux  
Fixfit Deluxe**  
16884XXX

Самозащитен против обратно изтичане

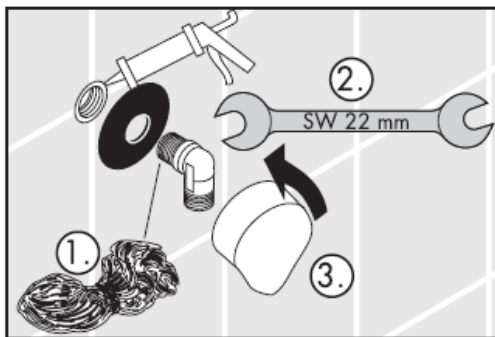
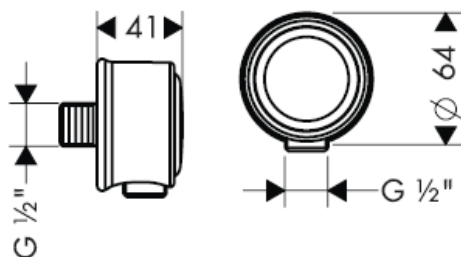
# AXOR<sup>®</sup>

hansgrohe

**Starck 27451XXX**  
**Steel 35884800/35888800**



**Montreux 16884XXX**

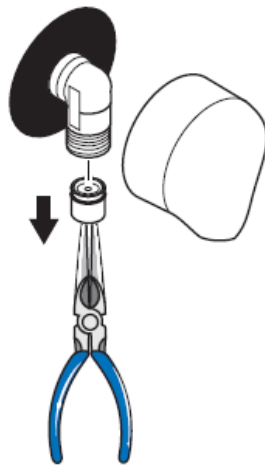


**Fixfit Deluxe 27451XXX/35888800/16884XXX**

DVGW Reg.-Nr.: DW-6511AT2271



**Внимание!** Съгласно DIN 1988 веднъж годишно трябва да се проверява функцията на приспособленията, предотвратяващи обратния поток.



**hansgrohe**

Hansgrohe · Postfach 1145 · D-77761 Schiltach · Telefon +49 (0) 78 36/51-1282 · Telefax +49 (0) 7836/511440  
 E-Mail: info@hansgrohe.com · Internet: www.hansgrohe.com

01/2006  
 9.08962.03  
 БЪЛГАРСКИ



# Udhëzime rreth montimit



**Steel Fixfit**  
35884800



**Steel Fixfit Deluxe**  
35888800  
**Starck Fixfit Deluxe**  
27451XXX



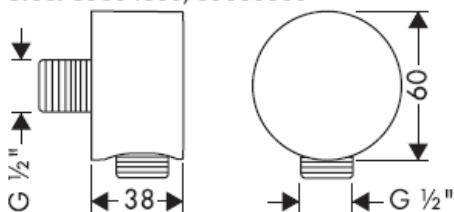
**Montreux  
Fixfit Deluxe**  
16884XXX

Siguresa kundër rrjedhjes në drejtim të kundërt

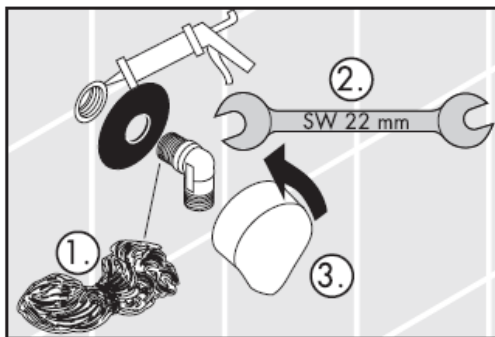
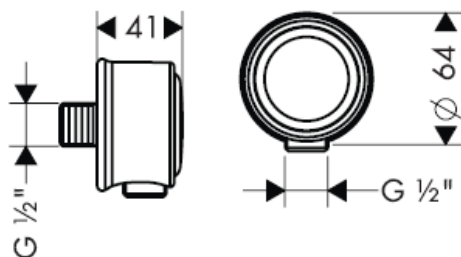
# AXOR<sup>®</sup>

**hansgrohe**

**Starck 27451XXX**  
**Steel 35884800/35888800**



**Montreux 16884XXX**

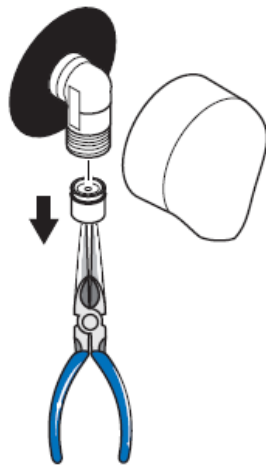


**Fixfit Deluxe 27451XXX/35888800/16884XXX**

DVGW Reg.-Nr.: DW-6511AT2271



**Kujdes!** Penguesit e rrjedhjes në drejtim të kundërt në bazë të normës DIN 1988 duhen kontrolluar njëherë në vit.



**hansgrohe**